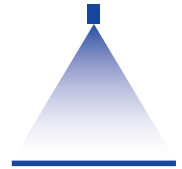


# Low pressure tongue-type nozzles Series 684



### Features:

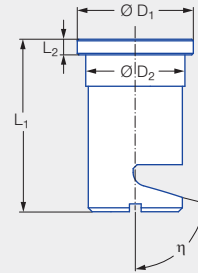
- Sharply delimited, powerful flat fan spray
- Large spray angle
- Assembly with retaining nut
- Non-clogging

### Applications:

- Foam control
- Cleaning processes
- Washing processes



Series 684



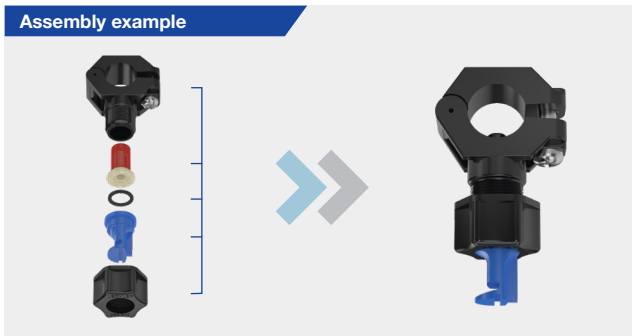
G	Dimensions [mm]			Weight [g]
	L <sub>2</sub>	Ø D <sub>1</sub>	Ø D <sub>2</sub>	
Assembly with retaining nut 3/8 BSPP	2.00	14.80	12.65	3.00

Spray angle	η	Ordering no.		Color <sup>1</sup>	Bore diameter B [mm]	L <sub>1</sub> [mm]	V̇ water [l/min]			Spray width B [mm] (at p = 2 bar)	
		Type	Mat. no.				p [bar]				
			56				5E	1.0	2.0	5.0	H = 250 [mm]
140°	75°	684.348	●		Green	0.70	20.00	0.35*	<b>0.50</b>	0.79	1,240
		684.368	●	●	Yellow	0.80	20.00	0.45*	<b>0.63</b>	1.00	1,250
		684.408	●		Blue	1.00	20.00	0.71	<b>1.00</b>	1.58	1,260
		684.448	●		Red	1.20	20.00	0.88	<b>1.25</b>	1.98	1,260
		684.488	●	●	Brown	1.30	20.00	1.13	<b>1.60</b>	2.53	1,270
		684.528	●		Grey	1.50	20.00	1.41	<b>2.00</b>	3.16	1,280
		684.568	●	●	White	1.70	19.00	1.77	<b>2.50</b>	3.95	1,290
		684.608	●		Light blue	1.90	19.00	2.23	<b>3.15</b>	4.98	1,300
		684.688	●		Green	2.40	17.00	3.54	<b>5.00</b>	7.91	1,330
		684.728	●	●	Black	2.70	17.00	4.45	<b>6.30</b>	9.96	1,340
684.808	●		Beige	3.40	16.00	7.07	<b>10.00</b>	15.81	1,340		

\* Differing spray pattern.

<sup>1</sup> PVDF material is always blue.

### Assembly example



Conversion formula for this series:  $\dot{V}_2 = \dot{V}_1 \cdot \sqrt{\frac{p_2}{p_1}}$

Ordering Type + Material no. = Ordering no.  
example: 684.348 + 56 = 684.348.56

Assembly accessories can be found in Chapter 9 "Accessories".